

## ***Table of Contents***

|                                    |          |
|------------------------------------|----------|
| <b>Requirements</b>                | <b>1</b> |
| <b>Physical Installation</b>       | <b>2</b> |
| <b>Video Server administration</b> | <b>3</b> |
| <b>Further Configuration</b>       | <b>5</b> |

This page is intentionally left blank

Thank you for purchasing PLANET IVS-100, Internet video server for IP surveillance applications. Before installation, please be sure to read this quick installation guide and user's manual carefully to complete machine installation.

## **Requirements**

|   |  |
|---|--|
| <b>IVS-100</b>  |  |
| <b>Network Environment</b>                                      |  |
| LAN   | 10/ 100M Ethernet  |
| <b>Camera</b>   |  |
| Analog camera with coaxial connector                            |  |
| <b>Monitoring System Recommended</b>                            |  |
| System Hardware   | <ul style="list-style-type: none"> <li>• CPU: Pentium III, 800 MHz or above</li> <li>• Memory Size: 128 MB (256 MB recommended)</li> <li>• VGA card resolution: 1024 x 768 or above</li> </ul>   |
| <b>System Requirement for Viewer &amp; Recorder Application</b> |  |
| Support OS  | Win 98 SE, Win 2000, Win Me, Win XP  |
| System Hardware   | <p>1-4 cameras surveillance application</p> <ul style="list-style-type: none"> <li>• CPU: Pentium III, 800 MHz or above</li> <li>• Memory Size: 128 MB (256 MB recommended)</li> <li>• VGA card resolution: 1024 x 768 or above</li> </ul> <p>4 or more cameras surveillance application</p> <ul style="list-style-type: none"> <li>• CPU: Pentium 4, 1.7G MHz or above</li> <li>• Memory Size: 512 MB or above</li> <li>• VGA card resolution: 1024 x 768 or above</li> </ul> |

## Physical Installation

### 1. Connect an Ethernet cable

Connect one end of an Ethernet cable to the **LAN** port located on the IVS-100 rear panel and attach the other end to the network device (hub or switch).

### 2. Connect the CCTV camera

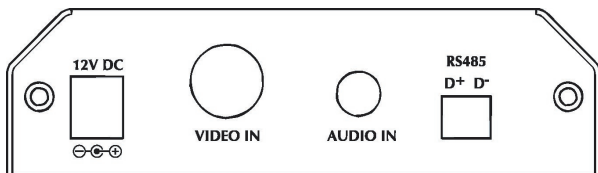
Connect CCTV camera cable to the **Video-in** port located on the IVS-100 front panel and make sure the camera is securely connected.

### 3. Attach the external power supply

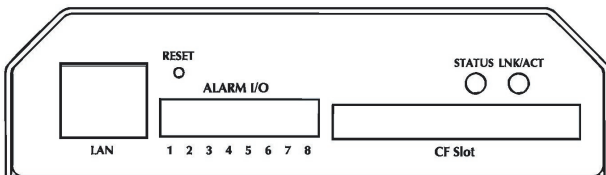
Connect the provided power adapter to the IVS-100 s connector labeled "12VDC" on rear panel. Power on the CCTV camera as well.

### 4. Check the LEDs

The STATUS would be **ON**, and the 10/100 LED would flash for few times to detect network connection. The network indication LEDs would be on depending on which network type is available.



Front panel of IVS-100



Rear panel of IVS-100

---

## **Video Server administration**

PLANET IVS-100 provides GUI (Web based, Graphical User Interface) for machine management and maintenance.

When you installed your IP camera over your network environment,

To start IVS-100 web configuration, you must have one of these web browsers installed on computer for web management

- Microsoft Internet Explorer 6.0 or higher with Java support

Default LAN interface IP address of IVS-100 is **192.168.0.20**. You may now open your web browser, and insert **http://192.168.0.20** in the address bar of your web browser to logon IVS-100 web configuration page.

IVS-100 will prompt for User Name and Password, please enter: **admin** as username to continue machine Web Management.

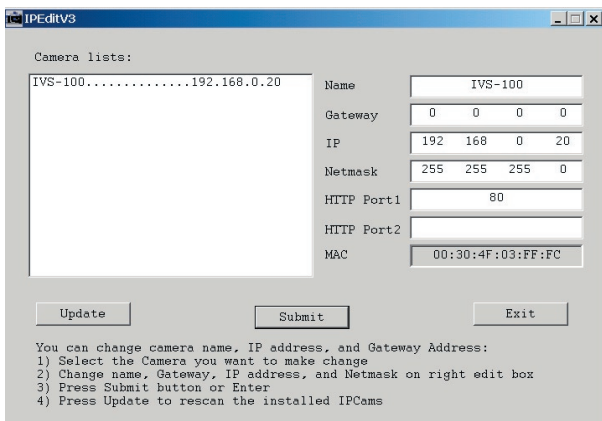
If difficulty is met, please refer to the following steps to establish the connection:

- Your PC can establish a physical connection to the Internet Camera. The PC and the Video Server must be directly connected (using the LAN port on the IVS-100) or on the same LAN segment. That is, the PC must be configured to an IP address and subnet mask in 192.168.0.x segment. For example: IP: 192.168.0.2, subnet mask: 255.255.255.0.
- The Internet Video Server must be installed and powered ON.
- If the IVS-100's default IP Address (**192.168.0.20**) is already used by another device, the other device must be turned OFF until the Video Server is allocated a new IP Address during configuration.

Or you may execute **IPEditV3** to discover IVS-100's IP address. Before starting installation, please ensure that:

Procedures of IPEdit utility

- Please find the **IPEditV3.exe** in the Utility folder on user's manual CD
- Double-click the **IPEditV3.exe** and the following screen should be prompt on your computer.
- Choose the destination camera for IP address and device name modifications.



- After modifications, you may now connect the IVS-100 via web browser.

---

## ***Further Configuration***

If you want to configure more detail settings of IVS-100, please refer to our user's manual in the CD. If you have any difficulty on resolving the problem while installing or using the camera, please feel free to contact PLANET for support.

---

This page is intentionally left blank