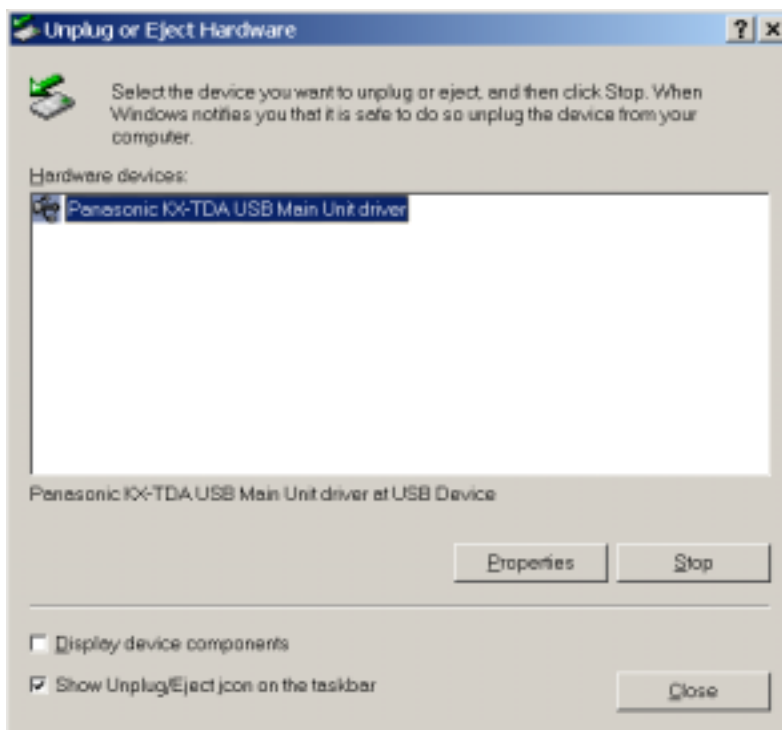


Update TDA/TVM/TE USB Driver under Windows 2000

1. When you plug-in a device to your PC, there will be a plug-in device icon (the green arrow icon at the left of the speak icon) at the right bottom corner (system tray).



2. After double-click this icon, the follow plug-in device list will appear.



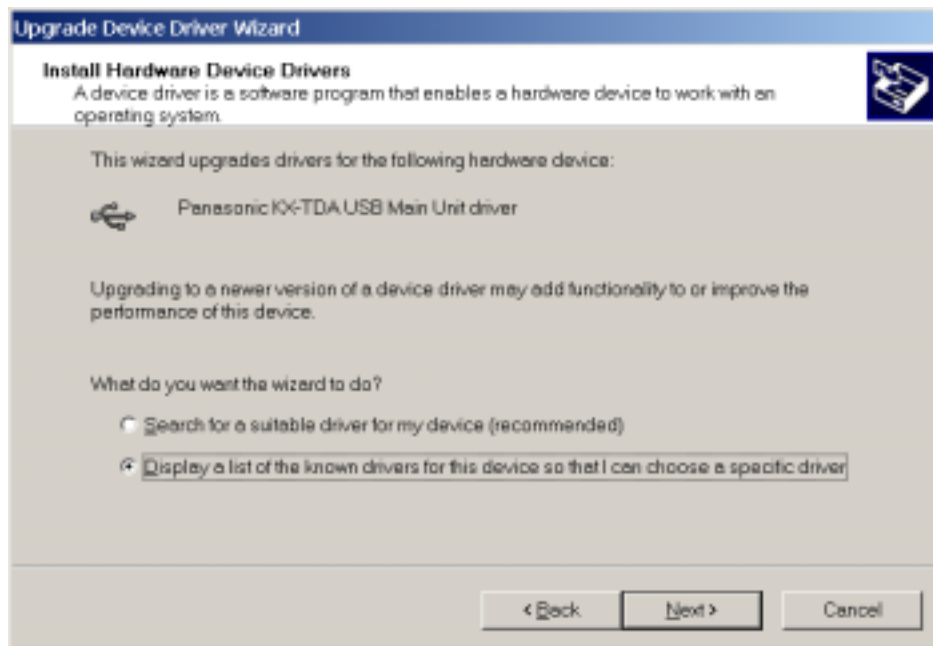
3. After selecting the device, click “Properties” to open the device properties dialog.
* Don’t double-click the device on the above screen. Windows takes the double-click operation as “Stop” by default.



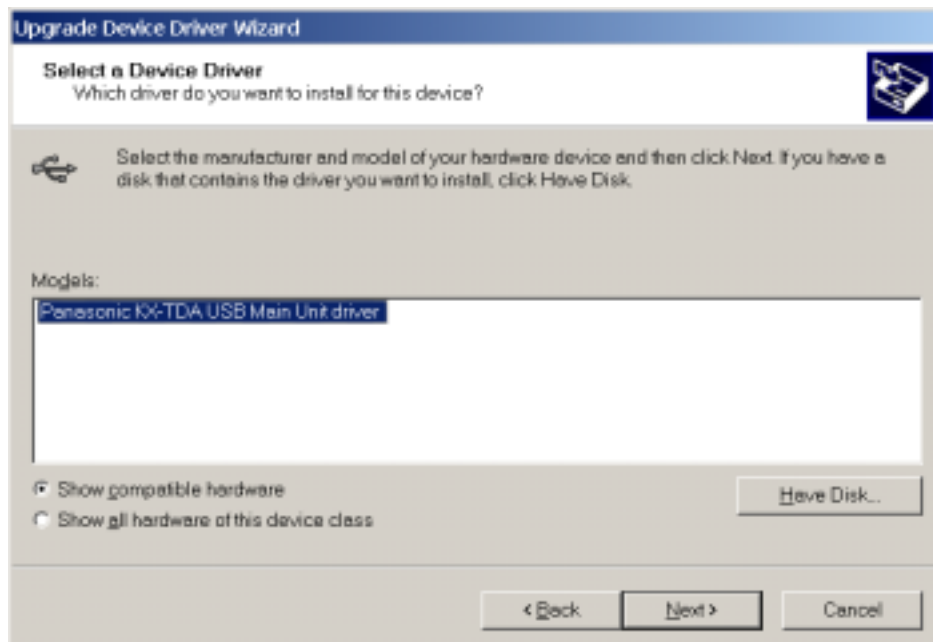
4. On the above screen, click “Update Driver” to start update process.



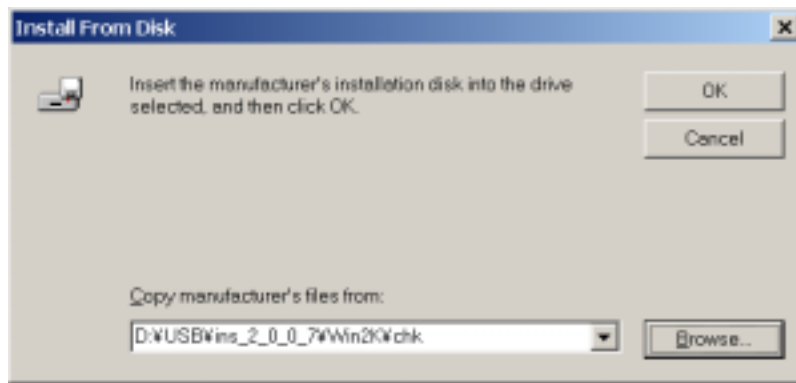
5. After clicking “Next”, the following screen will appear.



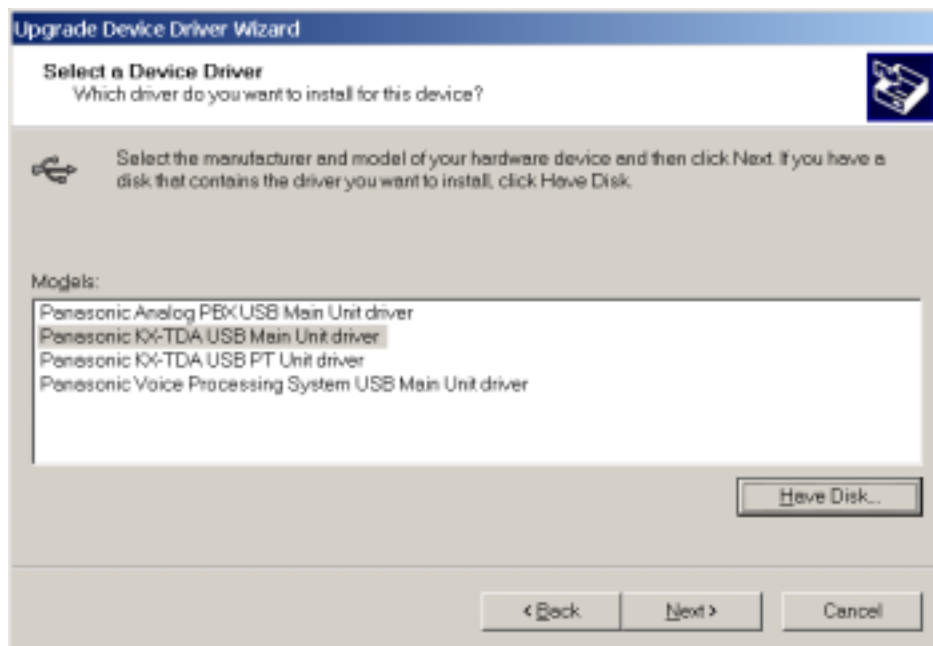
6. On the above screen, select “Display a list of ...” to install the driver.



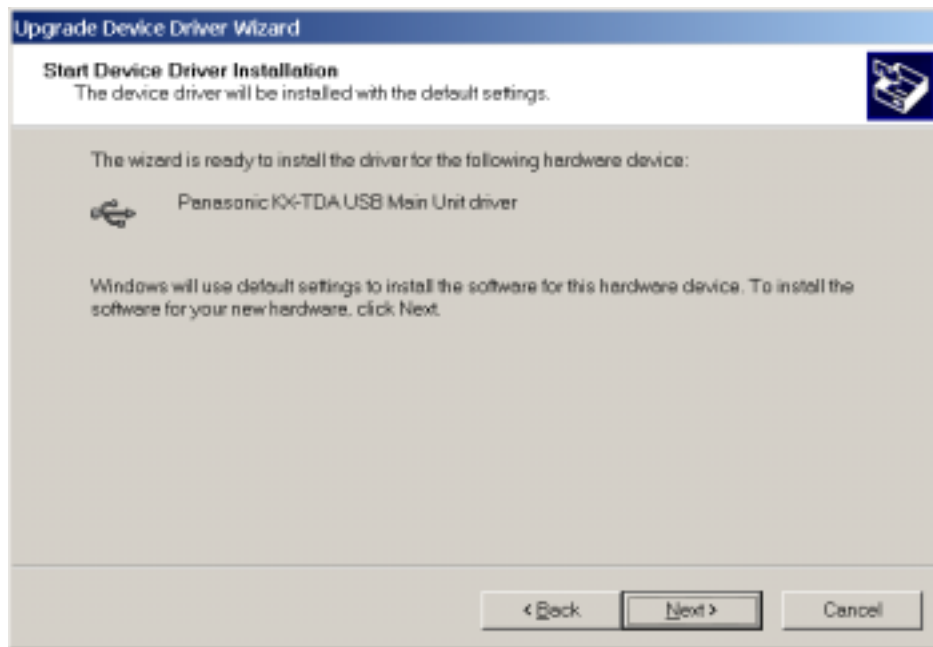
7. Select “Have Disk”.



8. On the above screen, browse to the driver file directory, and then click “OK”. Then Windows 2000 will show the driver list in the driver file directory.



9. Click “Next” on the above screen.



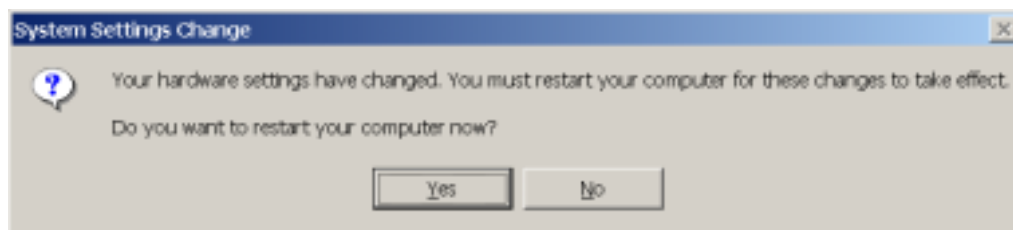
10. Click “Next” on the above screen.



11. Click “Finish”. Then the driver properties dialog will be updated to the latest version.



12. Click “Close”. Most of the time, the driver update is finished at this time. You need not restart the PC. However, if you update the driver while running some TDA/TVM/TE applications, especially when the TSP system service is running at the background, Windows will ask you to reboot the PC. Click “OK” to reboot the PC.



13. After PC is rebooted, the driver will be updated to the latest version.